

Prep Tables

# TPP-AT-67-HC

 Pizza Prep Table, 9x 1/3 Top Pans, 2 Solid Swing Doors



Dimensions		Build		Technical	
External Width (mm)	1709	Door Description	2 Solid Swing Doors	Temperature Holding	0.5 : 5°C
External Depth (mm)	854	Exterior Construction	Stainless steel front, top & lids, aluminium sides and rear	Refrigerant	R290
External Height (mm)	1133	Interior Construction	Clear coated aluminium, stainless steel base	Voltage / Frequency / Phase	220-240V/50-60Hz/1
Exclusions	Depth does not include 26 mm for rear bumpers and 42mm for cutting board overhang.	Air Intake Position	Front	Amps	1.8
Gross Volume (Litres)	583	Ventilation Position	Front	Wattage	414
Supplied Shelves	4	Clearance Required	Zero back and sides	Defrost Type	Auto
Shelf Size (L x D mm)	601 x 712	Cord Length (Meters)	3.35		
Internal Net Height (mm)	550	Standard w/ Locks	Not standard (SPEC3 option)		
Top Pans Supplied (max depth mm)	9x 1/3 GN (150)				
Unpackaged Weight (kg)	196				
Packaged Weight (kg)	207				
Packaged Dimensions (W x D x H mm)	1880 x 966 x 1245				
Cutting Board (L x D mm)	1709 x 496				
Supplied with	ø 127 mm castors (146 mm height)				




Specifications subject to change without notice.  
Chart dimensions rounded up to the next whole millimeter (inches rounded up to the 1/8")

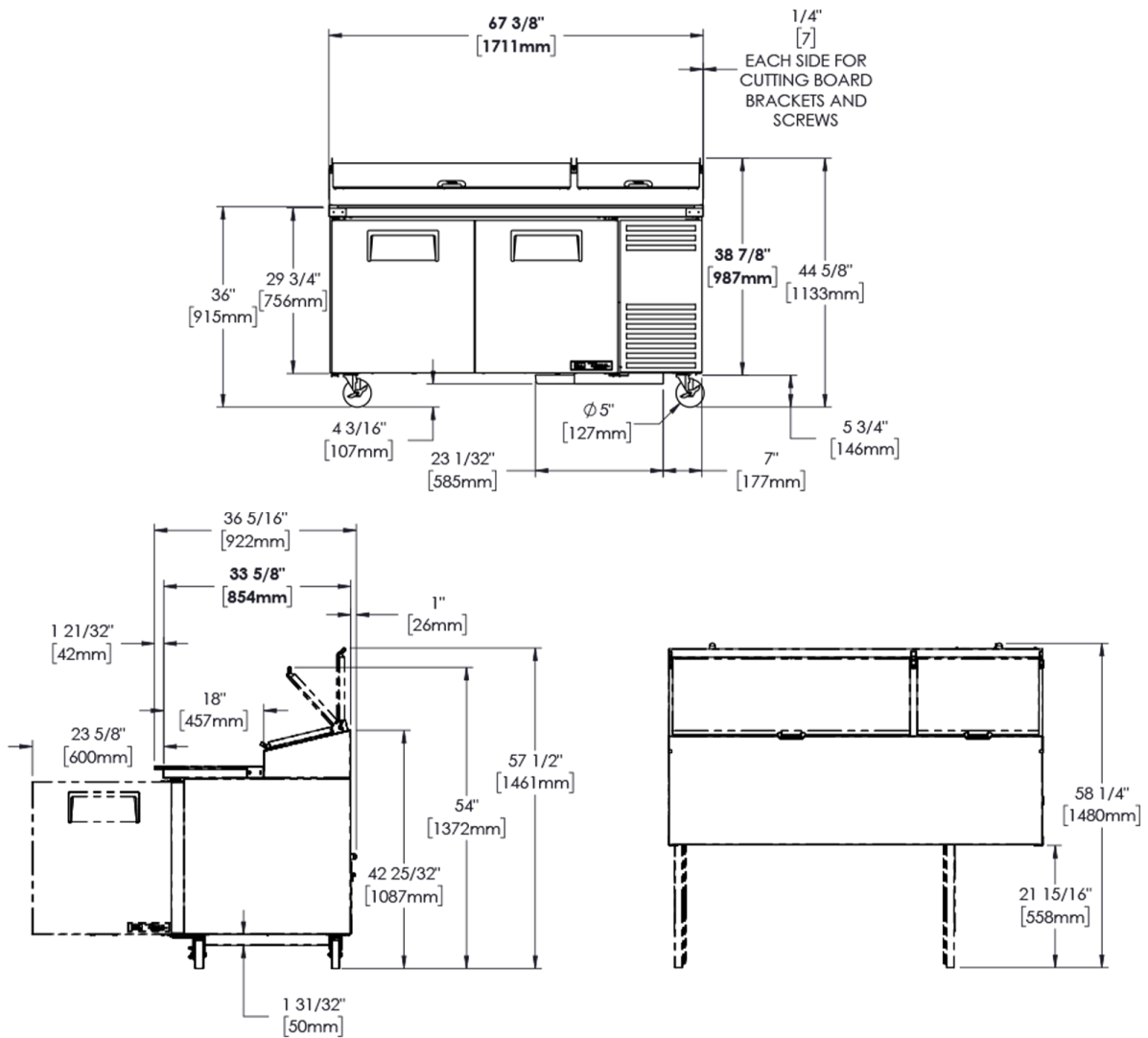
UK & Ireland [0800 783 2049](tel:08007832049)  
 EMEA [+41 61 563 07 05](tel:+41615630705)  
 Australia [+61 2 9619 9999](tel:+61296199999)

[TFIUK@truemfg.com](mailto:TFIUK@truemfg.com)  
[TrueCHCustomerService@truemfg.com](mailto:TrueCHCustomerService@truemfg.com)  
[TrueRefAus@truemfg.com](mailto:TrueRefAus@truemfg.com)



# TPP-AT-67-HC

 Pizza Prep Table, 9x 1/3 Top Pans, 2 Solid Swing Doors



Specifications subject to change without notice.  
Chart dimensions rounded up to the next whole millimeter (inches rounded up to the 1/8")

UK & Ireland [0800 783 2049](tel:08007832049)  
 EMEA [+41 61 563 07 05](tel:+41615630705)  
 Australia [+61 2 9619 9999](tel:+61296199999)

[TfIUK@truemfg.com](mailto:TfIUK@truemfg.com)  
[TrueCHCustomerService@truemfg.com](mailto:TrueCHCustomerService@truemfg.com)  
[TrueRefAus@truemfg.com](mailto:TrueRefAus@truemfg.com)

