

User Guide OD1100N/OD720N

Safety

Always observe safety precautions when using any electrical appliance. Read these instructions carefully and keep them for future reference.

WARNING

- Ensure the appliance is disconnected from the power supply before performing any cleaning or maintenance.
- Do not cover the grilles or block the entry or exhaust of airflow by placing objects up against the refrigeration unit.
- Should manual defrosting be necessary, turn off the refrigeration system and allow the ice to melt by air circulation. Collect ice and water during defrost to prevent a slip hazard. Do not use mechanical methods to remove ice, as this may damage the refrigeration circuit.
- Do not use any electrical devices or appliances inside the food storage compartment.

This appliance is not intended for use by persons (including children) with reduced physical, sensory or mental capabilities, or lack of experience and knowledge, unless they have been given supervision or instruction concerning use of the appliance by a person responsible for their safety. Children should be supervised to ensure that they do not play with the appliance.

- Do not use this appliance for other than its intended use.
- Do not insert fingers/foreign objects into any holes.
- Only use this appliance with the voltage specified on the cabinet rating label.
- Ensure the appliance has adequate ventilation as this is essential to economical, high performance.
- Be careful not to touch moving parts and hot surfaces.
- For your own safety and that of others, ensure that all electrical work is done by authorised personnel.
- If the power supply flexible cord becomes damaged, it must be replaced by an authorised service agent or similarly qualified person in order to avoid a hazard.
- Ensure all necessary safety precautions are observed during installation or removal of the refrigeration unit.
- The appliance is not designed to be stable while in motion. Use extreme caution when moving or transporting it.
- Do not store explosive substances such as aerosol cans with a flammable propellant in this appliance.
- If the cabinet is to be scrapped, ensure the cabinet is unplugged from the power supply and cut off the mains flex close to the back of the cabinet. Be mindful of the risk of animals or children becoming trapped in the appliance – either remove or secure doors if necessary.
- Refrigerant must be removed by a qualified service person and the cabinet recycled/disposed of in accordance with local regulations.

The fridge is designed to operate within a specific climatic class environment. The cabinet rating label inside the fridge lists the climate class number.

Climate class	Ambient temperature	Relative humidity
3	25°C	60%

The cabinet rating label includes relevant hazard symbols that may be associated with the fridge. Refer to the information below.

	WARNING The refrigeration system contains flammable R290 refrigerant. Do not tamper with it. The refrigeration system must only be serviced by qualified personnel.
--	--

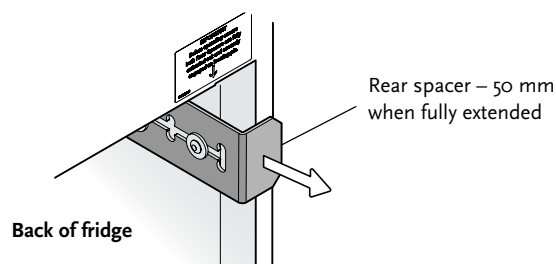
Installation

The fridge has been installed by SKOPE in a suitable location and should not be moved. If you need to reposition the fridge, consult your sales representative. The fridge should not be installed near air-conditioning outlets, heaters, doorways or drafts.

Ventilation

To prevent overheating and conserve energy, ensure there is always at least a 50 mm gap at the back, 200 mm on the top and 60 mm at the sides of the cabinet. Keep the ventilation slots in the lower front panel clear at all times. Never store cardboard cartons or other objects in front of the fridge.

To maximise airflow at the rear of the cabinet, ensure both rear stand-offs are fully extended outwards and locked into place. This will provide the necessary air gap at the rear of the cabinet for correct operation.



Sign

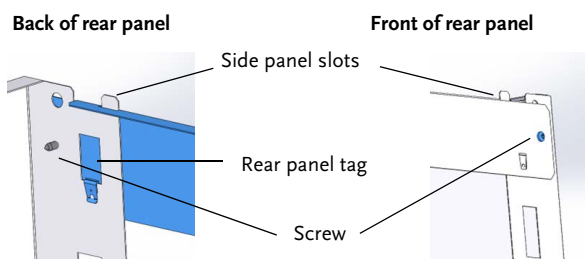
The OD1100N Low Sign model comes with the sign assembly fitted to the cabinet. For transit purposes, the OD1100N standard High Sign model has the sign assembly fitted temporarily to the cabinet, and the two side panels and rear panel packaged together in the cabinet. The high sign needs to be fitted to the cabinet on site.

To fit the high sign to the cabinet

1. Remove the high sign assembly from the cabinet.
2. Unpack the sign's side and rear panel package. There should be three pieces: two identical side panels, and one rear panel.
3. Loosen the four retaining screws on the roof of the cabinet and fit each sign side panel over the screws. Slide the sign side panels forward flush with the front of the cabinet, and tighten all four retaining screws.

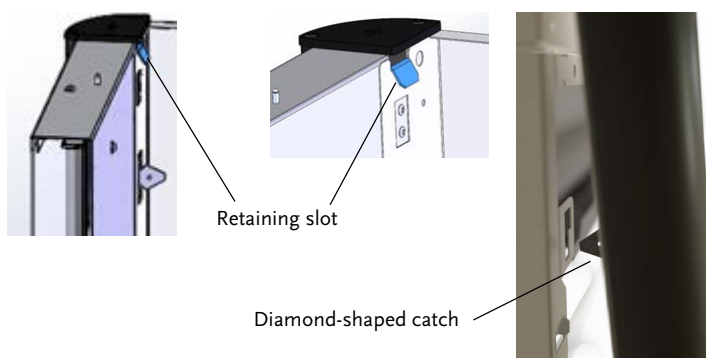
4. Fit the rear panel.

- Remove the two screws from the back of the side panels.
- Fit the rear panel across the back of the side panels by putting the tabs of the side panels into the top slots of the rear panel, and clipping each end tag of the rear panel into the retaining slot in the side panels.
- Fix the two screws back into each side of the rear panel to mount it on the side panels.



5. Attach the high sign assembly onto the cabinet.

- Clip the top of the sign into the retaining slots at the top of both side panels.
- Clip the diamond-shaped catches at bottom of the sign into both the bottom retaining brackets.



Gravity Matting (optional)

Gravity feed matting, including shelf dividers, is available for each shelf. The gravity shelf system includes two sizes to suit the different size shelves: 350 mm depth for the top four shelves, and 385 mm for the bottom shelf. Each has 16 dividers.

To fit the gravity feed matting and shelf dividers

1. Match up the shelf dividers with the corresponding matting.
2. Work across the matting and fit the centre dividers at required intervals.
3. Place the mat and dividers onto the matching shelf inside the cabinet.
4. Repeat for the remaining shelves.
5. To adjust the spacing between dividers:
 - Push the divider towards the rear of the cabinet until it unclips from the matting.
 - Move the divider to the required spacing, and insert into the slot in the matting kit.
 - Pull the matting towards the front of the cabinet to lock it in place.

Using the Fridge

The fridge is run by an electronic controller which monitors use and automatically switches the fridge between "Day" mode, and energy-saving "Night" mode when the night blind is opened and closed.

Do not overload the power supply.

Night Blind

The fridge is fitted with a manual night blind which has a switch that automatically tells the electronic controller to run the fridge in Day mode (with the lights on) when in the open position, or Night mode (with the lights off) when the blind is in the closed position, saving power.

The night blind is located at the top of the cabinet opening and is not visible when in the open position.

During store closing hours use the handle to pull the blind down and hook it under the night blind retaining brackets at the bottom of the fridge opening. To open, use the handle to release the blind from the retaining brackets, and control the blind as it opens.

Lighting

The cabinet is lit by 7.5 W LED modules fitted to each shelf which are not user-replaceable and must not be tampered with in any way. The OD1100N sign is lit by a 7.5 W sign light. If any lighting is not working properly arrange a service call.

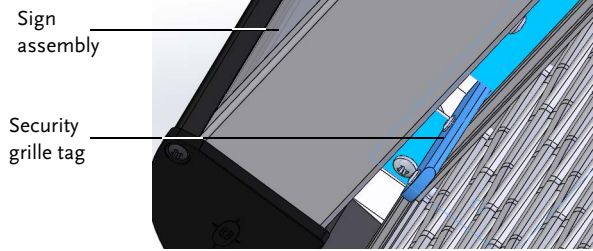
Security Grille (optional)

For security purposes an optional lockable security grille is available. The security grille fits in the front opening of the cabinet and is locked by two keyed security bolts. For convenience both locks use the same key.

To fit and remove the security grille

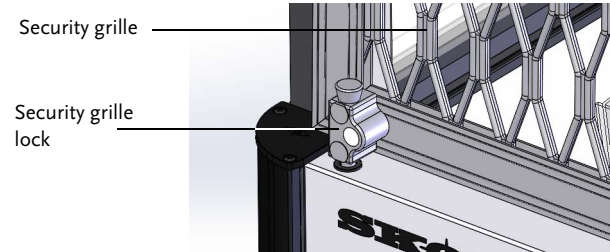
1. Position the security grille (with the tags at the top and locks on the sides) into the top of the cabinet opening.

2. Manoeuvre the security grille into position so that both tags at the top of the grille fit into the slots under the night blind bracket.



3. Position the bottom of the grille to align both the security lock bolts with the holes on the top of the kick panel.

4. Engage both the lock bolts and lock with the security key.



5. To remove the security grille, reverse the fitting instructions (steps 1 to 4 above).

Shelves

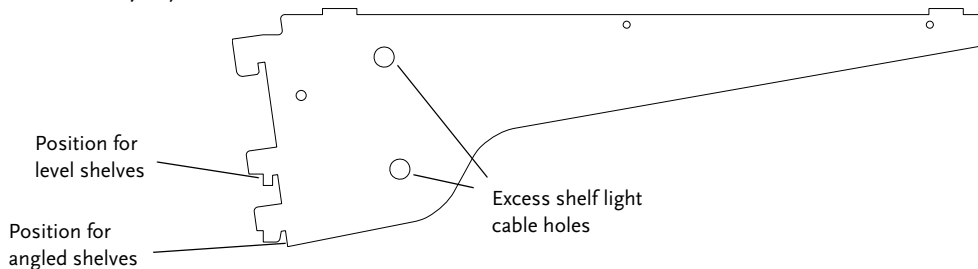
OD720N

3 × adjustable angle (8° or flat), adjustable height shelves + 1 fixed angle (8°) bottom shelf.
 Top two shelves: 1170W × 374D, 3rd shelf: 1170W × 394D,
 bottom shelf: 1177W × 424D

OD1100N

4 × adjustable angle (8° or flat), adjustable height shelves + 1 adjustable angle (8° or flat) bottom shelf. Optional gravity feed system available.
 Top two shelves: 1170W × 360D, middle two shelves: 1170W × 380D,
 bottom shelf: 1179W × 400D

All shelves except the bottom shelf are held in place by two cantilevered shelf brackets which clip into cut-outs in the cabinet back duct. The height of these shelves can be vertically adjusted at 28 mm increments.



There is a maximum load of 46 kg per shelf. Do not overload the shelves. Remove product if the shelf is flexing.

Cleaning and Maintenance

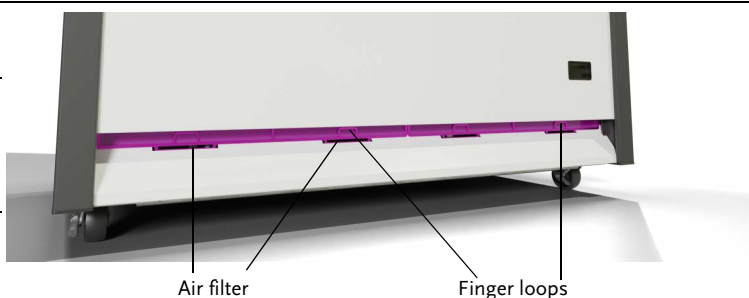
To ensure the fridge continues to run efficiently and reliably, carry out the following cleaning tasks routinely. Always disconnect the fridge from the power supply before cleaning or maintenance.

Frequency	Task
Regularly	Wipe the inside and outside of the fridge with a damp cloth.
	Clean up any spills as they occur.
	Lower the night blind and wipe the front and back with a damp cloth. Do not use hot water, as this may damage the material.

Frequency	Task
Monthly	Remove and clean the air filter (see instructions below).
Six-monthly	Arrange a service technician to clean the air filter and condenser coil.
Yearly	Remove the gravity feed matting (if fitted) and thoroughly clean the shelves and matting.
	Clean the debris catch tray under the bottom shelf – OD1100N only (see instructions below).
	Inspect the power cord for damage. If damage is found, disconnect the fridge from the power supply immediately and arrange service.

To remove and clean the air filter

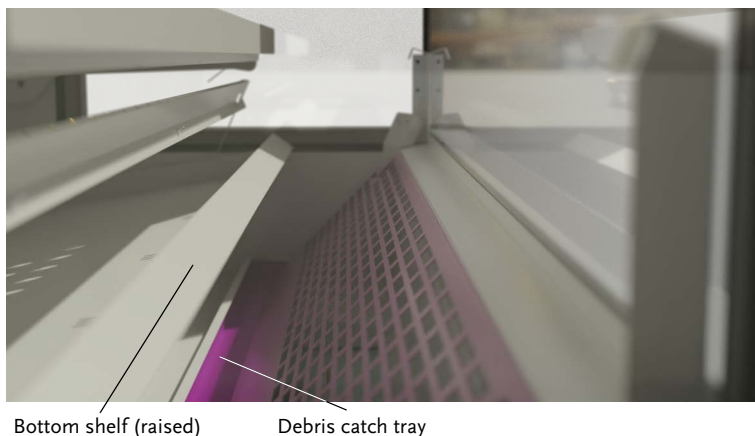
1. Disconnect the fridge from the power supply.
2. To remove the filter, use the finger loops to pull the filter up and detach from the front panel.
3. Clean the filter with a vacuum cleaner, wash with cold water and shake excess water off before refitting. Do not apply hot water, blow dry or place in a dishwasher. If necessary, discard and refit a new air filter.
4. To refit the filter, insert it up into the locating bracket on the top face of the front panel vent with the finger loops facing out. Then clip the filter into the slots on the bottom face of the front panel vent.



To clean the debris catch tray under the bottom shelf (OD1100N only)

There is a debris tray to catch any small objects that fall into the interior of the cabinet and prevent them falling into the refrigeration system. The tray sits under the bottom shelf and is fixed in place.
 Note that the debris catch tray is not designed to be watertight so any liquid spills should be cleaned up immediately.

1. Disconnect the fridge from the power supply.
2. Remove product from the bottom shelf.
3. Lift the bottom shelf and reach under to remove objects and wipe the tray clean.



Troubleshooting

Before calling for service, check the troubleshooting tips below:

Problem	Solution
Fridge not operating	Check that the power cord is plugged in correctly.
	Check the mains power supply.
Warm temperatures	Move the product away from the airflow slots.
	Clean the air filter (see above).
	Ensure that there is an adequate ventilation gap around the top, bottom and sides of the cabinet.
	Check that the fridge is not affected by heat sources such as heaters or the sun, and/or air currents including air-conditioning outlets, heaters and doorways. Contact your SKOPE representative for advice.
Lights not on	Open the night blind to switch to Day mode and turn the lights on.
Lights not working	Arrange a service technician to replace the faulty component.